


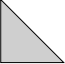





Jewel Box quilt.

48" x 48"

Fabric requirements.

-  Piece one 1 Fat Quarter of red fabric.
-  Piece two 3 Fat Quarters of dark purple fabric.
-  Piece three 3 Fat Quarters of lavender fabric.
-  Piece four 1 yard of lavender fabric.
-  Piece five 1 yard of pale blue flowered fabric.

$\frac{1}{2}$ yard for the binding.

1.5 yards for backing x 104".

Batting will need to be at least 50"x 50".

Copyright notice.

This pattern is for personal use.

No part of this pattern can be copied electronically or by any other method.

Please ask people to download their own copy of this pattern.

The patterns cannot be used for teaching a workshop without permission, please contact me for details of rates for teachers who want to use a pattern for a workshop.

If you wish to enter a quilt show with a quilt / wall hanging from any of my patterns you must credit me with the design.

You may make a quilt / wall hanging from this pattern for your own personal use or as a gift for someone else there is no limit for how many you make in this category.




To Make.

This block is made from two blocks repeated to make the Jewel Box.



Jewel Box quilt.

48" x 48"

1. Cut 64 of piece one, 2" x 2" . 
2. Cut 192 of piece two, 2" x 2". 
3. Cut 128 of piece three, 3.5" x 2" 

4. For block 1:-

Take one piece 1 and one piece 2 and sew them together, press the seam under piece 1, figure 1. Repeat this step three more times.



Figure 1

5. Sew two of the units together from step 6 together, figure 2, press the seams open, repeat this again to give you two A units.



A

Figure 2

6. To one of the A units add a piece 3 to either side to make unit B, figure 3, press the seam under piece 3. Repeat this with the second unit A.



B

Figure 3

7. Take a piece 3 and add to either side a piece 2 to make unit C, press the seam under piece 3, figure 4, make four C units.



C

Figure 4

8. Join two C units to a B unit. figure 5, press the seams open. Repeat this to make two of block 1.

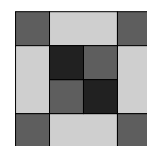
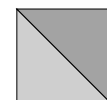


Figure 5

9. For block 2: -

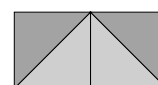
Use the grid method to make the half squares, make 128 half squares (pieces 5 and 6) using the half square grid method. Make the grid using 4" squares which can be trimmed down to 3.5" squares. This makes unit D make 8 of these. Figure 6.



D

Figure 6

10. Sew two of the D units together, figure 7, to make unit E press the seam to one side, repeat this three more times.



E

Figure 7



Jewel Box quilt.

48" x 48"

11. Join together two of the E units, figure 8, press the seams open, repeat this with the two remaining E units this gives you two of block 2.

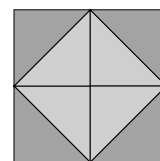


Figure 8

12. To make the Jewel Box sew a block 1 to a block 2 use the figure 9 to help position the dark squares (piece 1) in the correct direction, figure 9, repeat this with the other two blocks, press the seam under block 1.

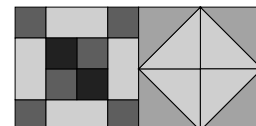


Figure 9

13. Join the two halves together, figure 10, press the seam to one side, this completes the Jewel Box block. Make 64 blocks.

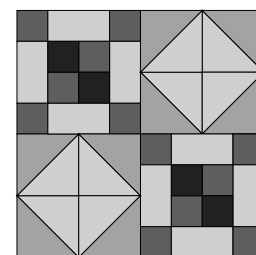


Figure 10

This is a repetitive pattern, below are the diagrams for sewing the quilt together :-

Figure 1 shows the first row of four blocks sewn together, make sure the dark squares (piece 1) go in the same direction.)

Repeat for the next four rows.

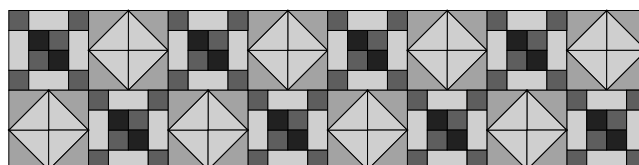


Figure 1

Figure 2 shows the first two rows joined together.

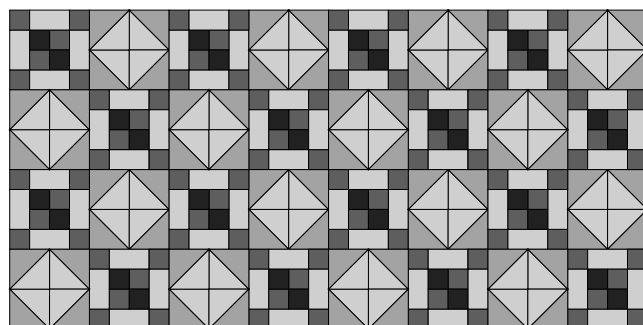


Figure 2



Jewel Box quilt.

48" x 48"

Figure 3 shows the completed quilt.

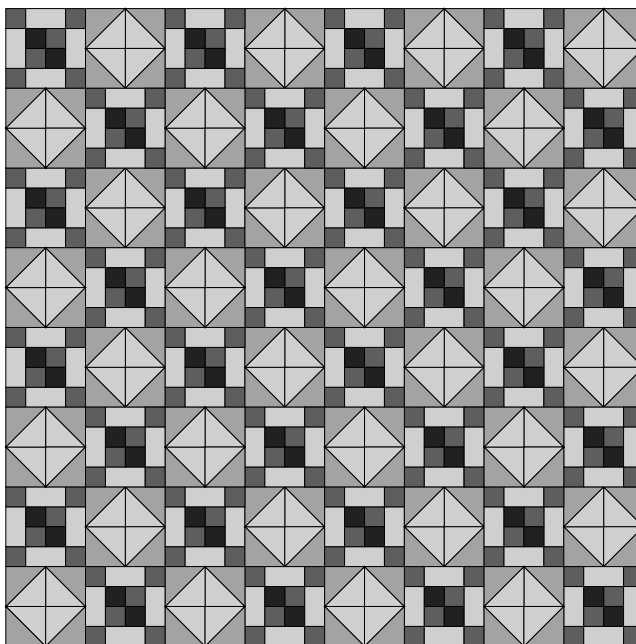


Figure 3

Once you have finished the top it will need to be backed, quilted and labeled.